



**CROOKED CREEK DUCK HUNTING PROPERTY  
ALLPORT, ARKANSAS  
LONOKE COUNTY, AR  
97+/- ACRES**

**PRESENTED BY**

**HOLMES**  
**REAL ESTATE**

**Marc Holmes – Principal Broker  
2770 Main St. Ste 288, Frisco, TX 75033  
501-438-9757 (office) (501-269-6963) cell  
[www.holmes-realestate.com](http://www.holmes-realestate.com)**

# CROOKED CREEK DUCK HUNTING PROPERTY

## PROPERTY SUMMARY

**OVERVIEW:** Positioned in a prime waterfowl flyway for duck hunting, this 97+/- acres includes 94.51 FSA Cropland Acres, with 40.01 acres enrolled in CRP hardwoods, yielding \$3,805 for the landowner (\$95.09/acre). This is a wildlife haven, with an abundance of deer cover on the property and across many of the neighboring properties. Proven duck hunting can be achieved on the approx. 1/4 mile of Crooked Creek frontage, two 15+/- acre impoundments managed for waterfowl, and the CRP when it floods naturally. A large pontoon boat converted to floating duck blind will also convey.

Both impoundments have water-control structures and drain pipes for managing water levels. The seller has been artificially flooding the two impoundments from Crooked Creek with a portable pump. Two fields, totaling 20+/- acres, are ideal for deer and dove food plots. There is one turbine well that was operational the last time it was used; its present condition is unknown and is being conveyed as-is. A large gravel parking pad makes access and preparation easy. Call to schedule a tour before it's gone!

**LAND AREA:**

- 97+/- Acres Total
- 32+/- Acres of Waterfowl Impoundments
- 40 +/- Acres in CRP
- 20+/- Acres of Open Field Food Plots
- 5+/- Acres in Crooked Creek

**LOCATION:** This property is located behind a locked gate, approx. 1.5 miles west of Humnoke and approx. 1 mile north of Allport.

**TAXES:** Estimated taxes were approx. \$260.14 in 2023.

**OFFERING PRICE:** The offering price for this property is \$525,000.

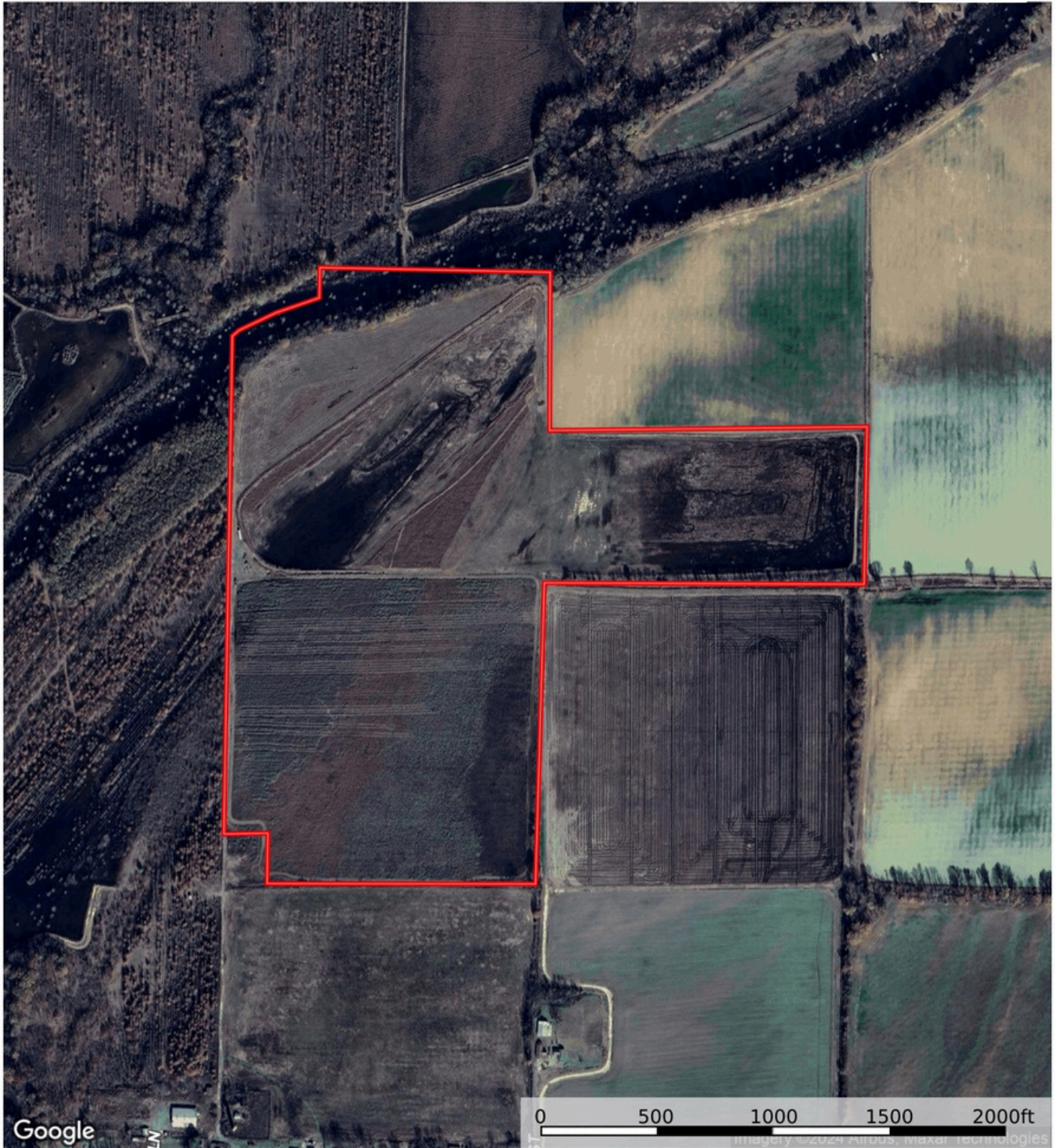
## Disclaimer Statement

Any/all information provided by Holmes Real Estate is intended for reference only and it's accuracy is not guaranteed. This listing is subject to errors, omissions or change without notice.

# AERIAL MAP

**Crooked Creek Hunting Property**  
Lonoke County, Arkansas, 97 AC +/-

**HOLMES**  
REAL ESTATE



 Boundary

**Marc Holmes**  
P: 501-438-9757

[www.holmes-realestate.com](http://www.holmes-realestate.com)

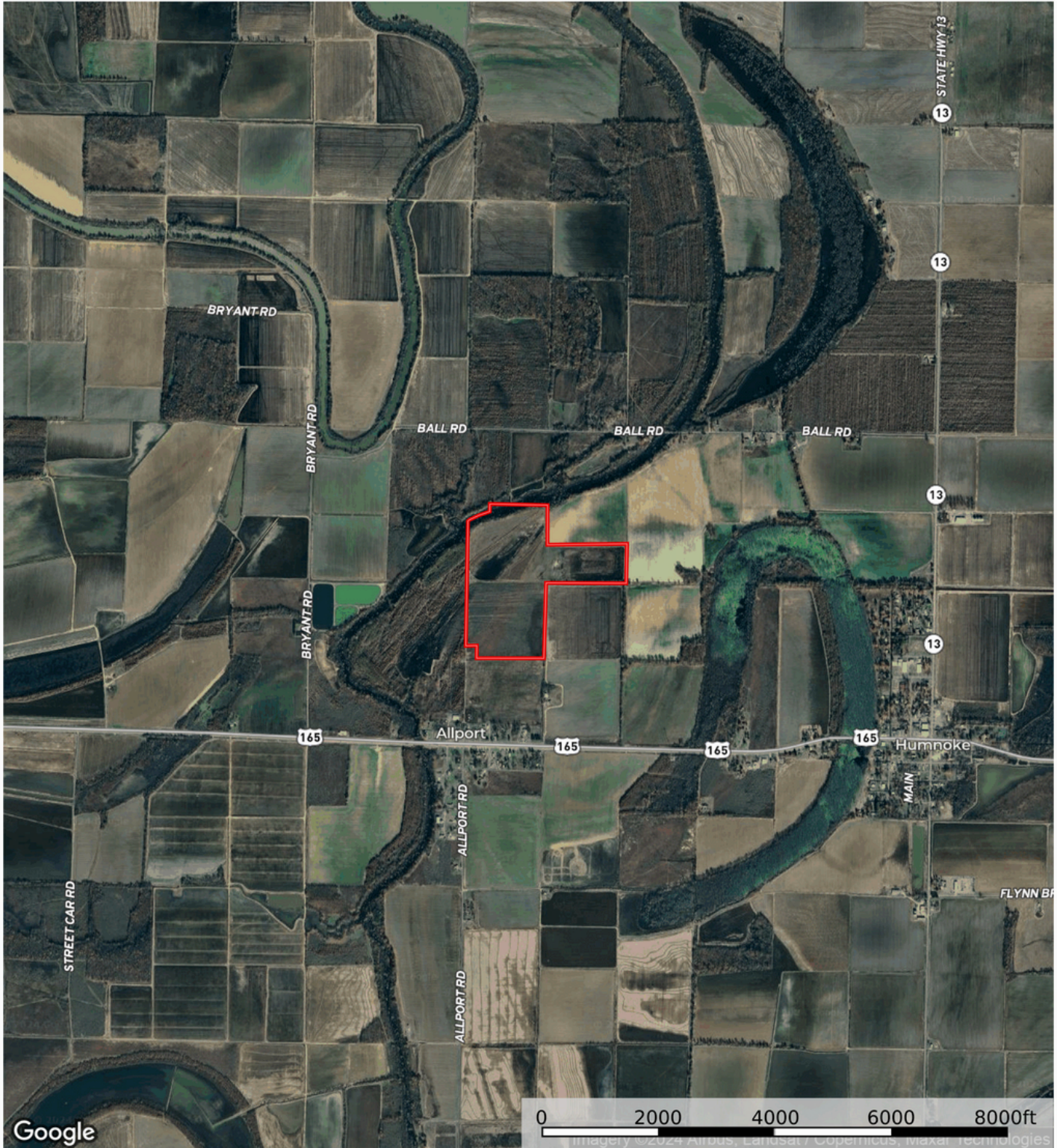
2770 Main St. Ste 288, Frisco, TX 75033

 The information contained herein was obtained from sources deemed to be reliable. Land id™ Services makes no warranties or guarantees as to the completeness or accuracy thereof.

# AERIAL MAP

**Crooked Creek Hunting Property**  
Lonoke County, Arkansas, 97 AC +/-

**HOLMES**  
REAL ESTATE




 Boundary

**Marc Holmes**  
P: 501-438-9757

[www.holmes-realestate.com](http://www.holmes-realestate.com)

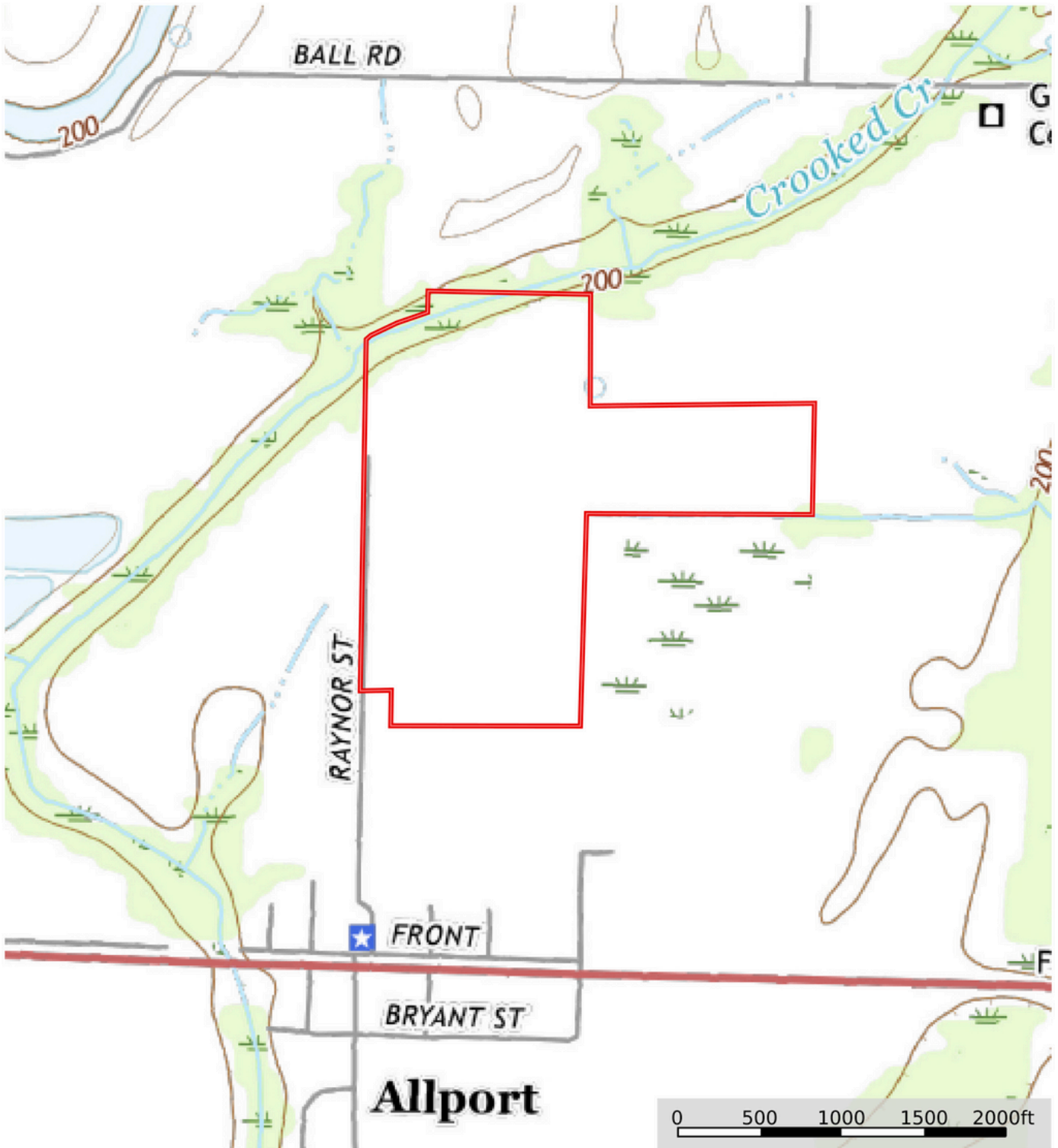
2770 Main St. Ste 288, Frisco, TX 75033

 The information contained herein was obtained from sources deemed to be reliable. Land id™ Services makes no warranties or guarantees as to the completeness or accuracy thereof.

# TOPOGRAPHY MAP

**Crooked Creek Hunting Property**  
Lonoke County, Arkansas, 97 AC +/-

**HOLMES**  
REAL ESTATE



Boundary

Marc Holmes  
P: 501-438-9757

[www.holmes-realestate.com](http://www.holmes-realestate.com)

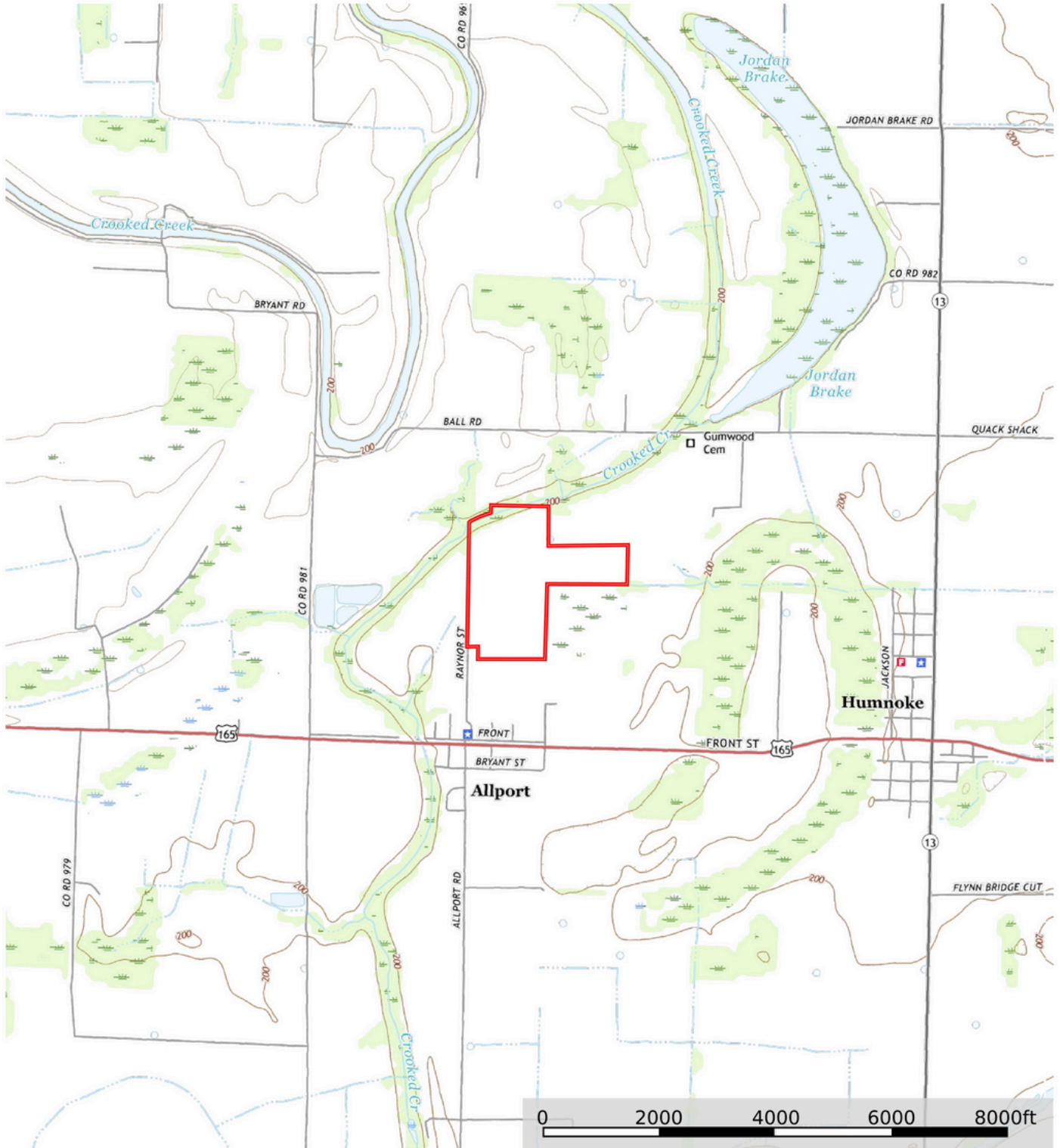
2770 Main St. Ste 288, Frisco, TX 75033

The information contained herein was obtained from sources deemed to be reliable. Land id™ Services makes no warranties or guarantees as to the completeness or accuracy thereof.

# TOPOGRAPHY MAP

**Crooked Creek Hunting Property**  
Lonoke County, Arkansas, 97 AC +/-

**HOLMES**  
REAL ESTATE



**Marc Holmes**  
P: 501-438-9757

[www.holmes-realestate.com](http://www.holmes-realestate.com)

2770 Main St. Ste 288, Frisco, TX 75033

**id.** The information contained herein was obtained from sources deemed to be reliable. Land id™ Services makes no warranties or guarantees as to the completeness or accuracy thereof.

# PHOTOS



# PHOTOS





# PHOTOS



