



**OZARK MOUNTAINS HUNTING PROPERTY  
LAMAR, ARKANSAS  
POPE COUNTY, AR  
40+/- ACRES**

**PRESENTED BY**

**HOLMES**  
**REAL ESTATE**

**Marc Holmes – Principal Broker  
2770 Main St. Ste 288, Frisco, TX 75033  
501-438-9757 (office) (501-269-6963) cell  
[www.holmes-realestate.com](http://www.holmes-realestate.com)**

# OZARK MOUNTAINS HUNTING PROPERTY

## PROPERTY SUMMARY

**OVERVIEW:** This 40-acre tract is the perfect combination for the outdoorsman, offering convenience, a proven history of large buck and turkey harvesting, access to electricity, bug-out potential, and beautiful mountain views. Only 20 minutes from Interstate 40 in Pope County, Arkansas, the entire property is usable, with a mix of flat and gently sloped terrain. Recent improvements include new interior roads for easy access, cleared areas for food plots, and a newly installed pond to provide a year-round water source.

For more information or to schedule a tour, contact us today!

**KEY FEATURES:**

- 40 acres of recreational land
- Healthy deer and turkey population
- Off-grid living or bug-out potential
- Electricity accessible
- County road frontage (Ross Hollow Rd)
- Mountain views
- Mix of flat and gently sloped terrain
- Newly cleared interior roads and food plot areas
- Newly installed pond

**LOCATION:** This property is located behind a locked gate, approx. 1.5 miles west of Humnoke and approx. 1 mile north of Allport.

**TAXES:** Estimated taxes are \$79.80 in 2024.

**OFFERING PRICE:** The offering price for this property is \$160,000.

### Disclaimer Statement

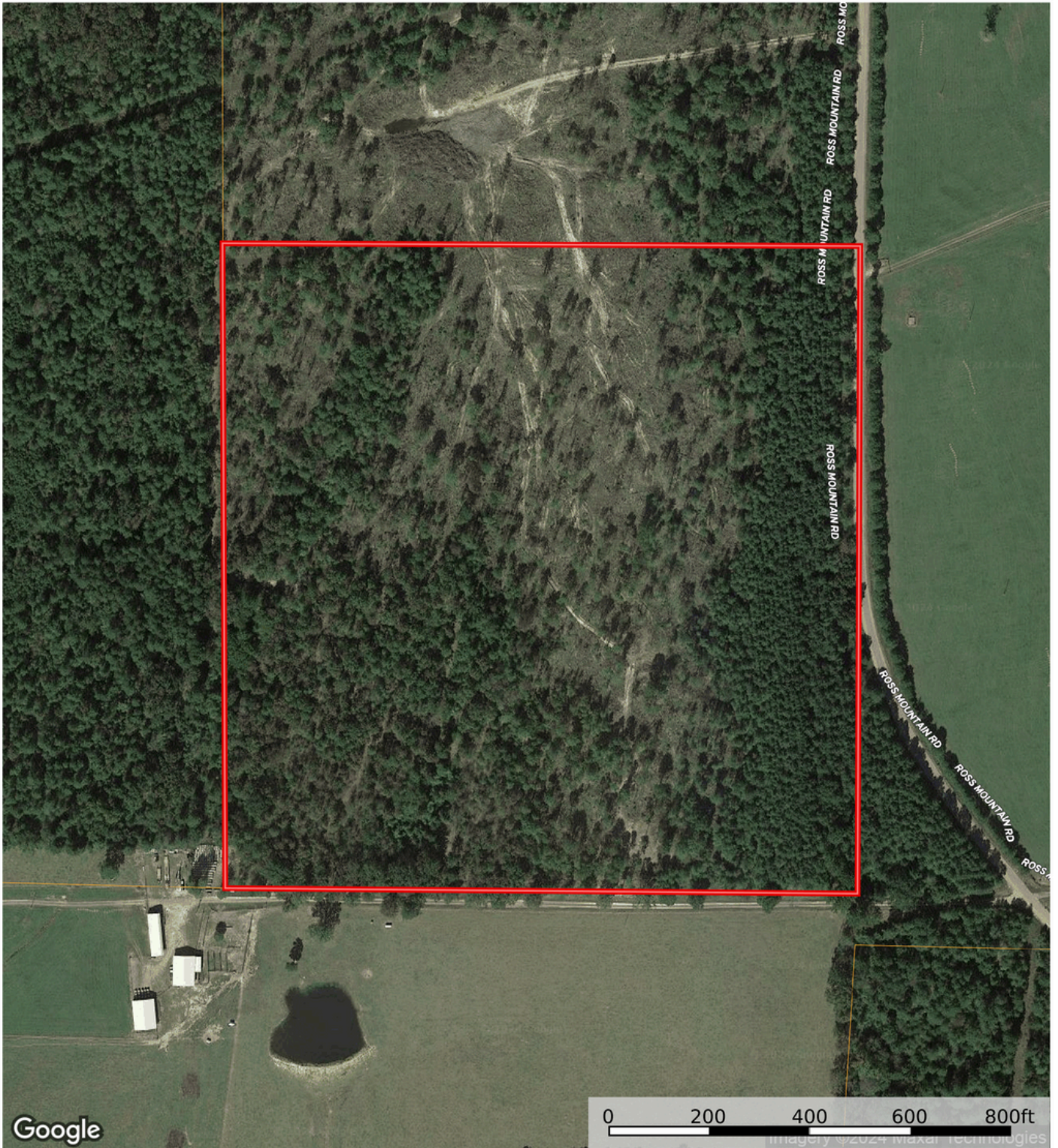
Any/all information provided by Holmes Real Estate is intended for reference only and it's accuracy is not guaranteed. This listing is subject to errors, omissions or change without notice.

# AERIAL MAP

**Pope.Helton.40**

Pope County, Arkansas, 40 AC +/-

**HOLMES**  
REAL ESTATE




 Boundary

**Marc Holmes**  
P: 501-438-9757

[www.holmes-realestate.com](http://www.holmes-realestate.com)

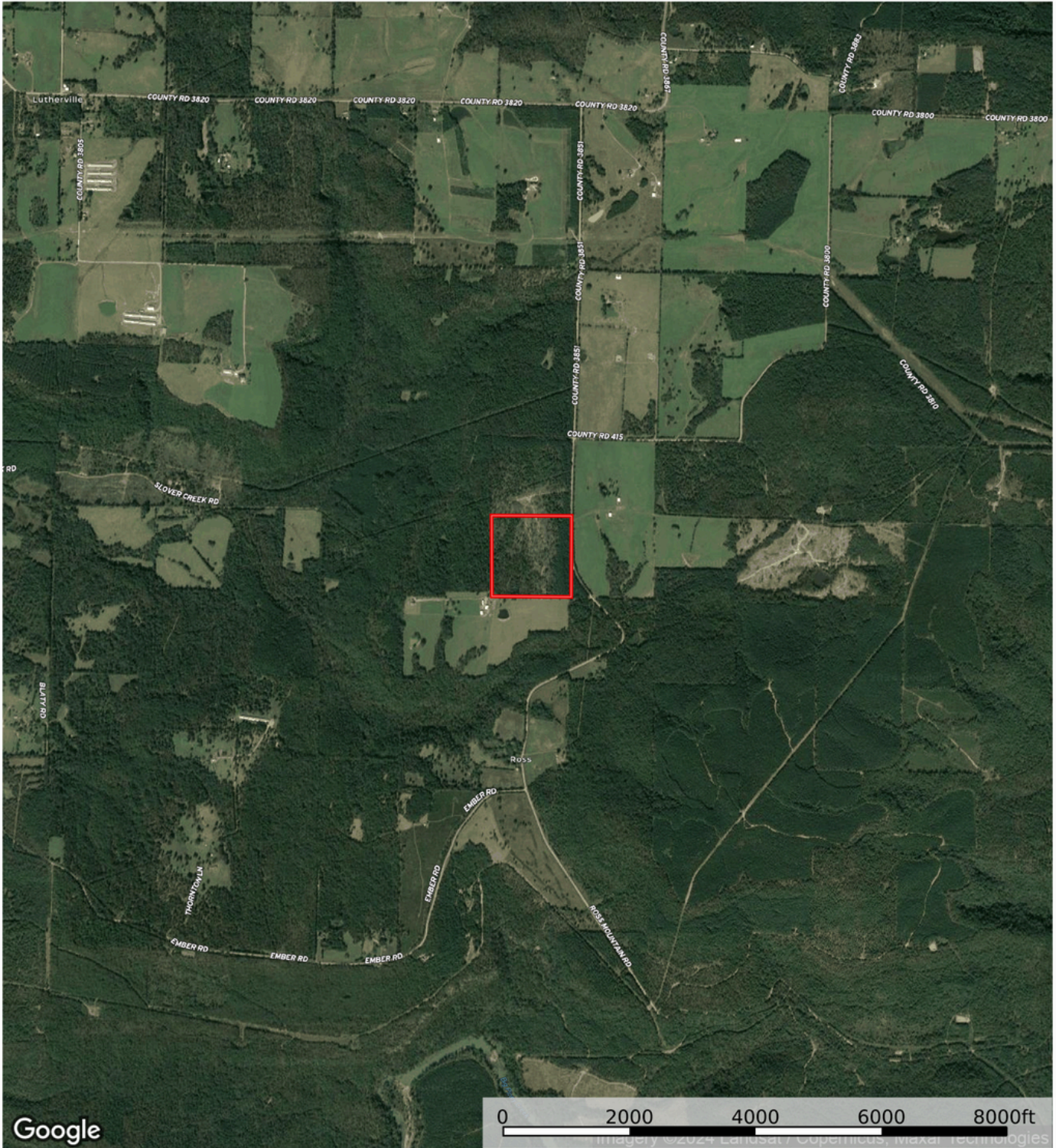
2770 Main St. Ste 288, Frisco, TX 75033

 The information contained herein was obtained from sources deemed to be reliable. Land id™ Services makes no warranties or guarantees as to the completeness or accuracy thereof.

# AERIAL MAP

## Pope.Helton.40

Pope County, Arkansas, 40 AC +/-



Boundary

Marc Holmes  
P: 501-438-9757

[www.holmes-realestate.com](http://www.holmes-realestate.com)

2770 Main St. Ste 288, Frisco, TX 75033

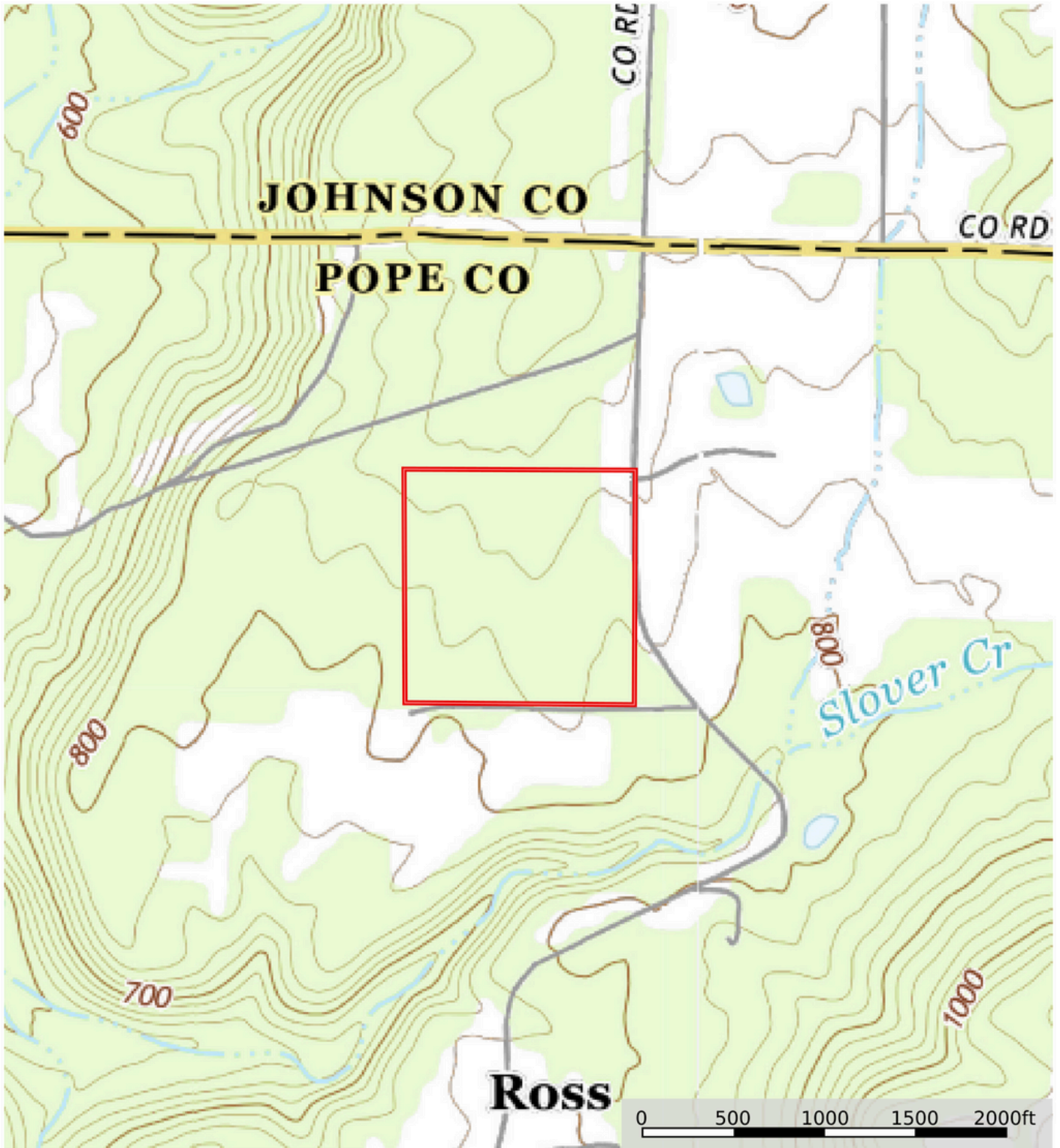
The information contained herein was obtained from sources deemed to be reliable. Land id™ Services makes no warranties or guarantees as to the completeness or accuracy thereof.

# TOPOGRAPHY MAP

**Pope.Helton.40**

Pope County, Arkansas, 40 AC +/-

**HOLMES**  
REAL ESTATE




 Boundary

**Marc Holmes**  
P: 501-438-9757

[www.holmes-realestate.com](http://www.holmes-realestate.com)

2770 Main St. Ste 288, Frisco, TX 75033

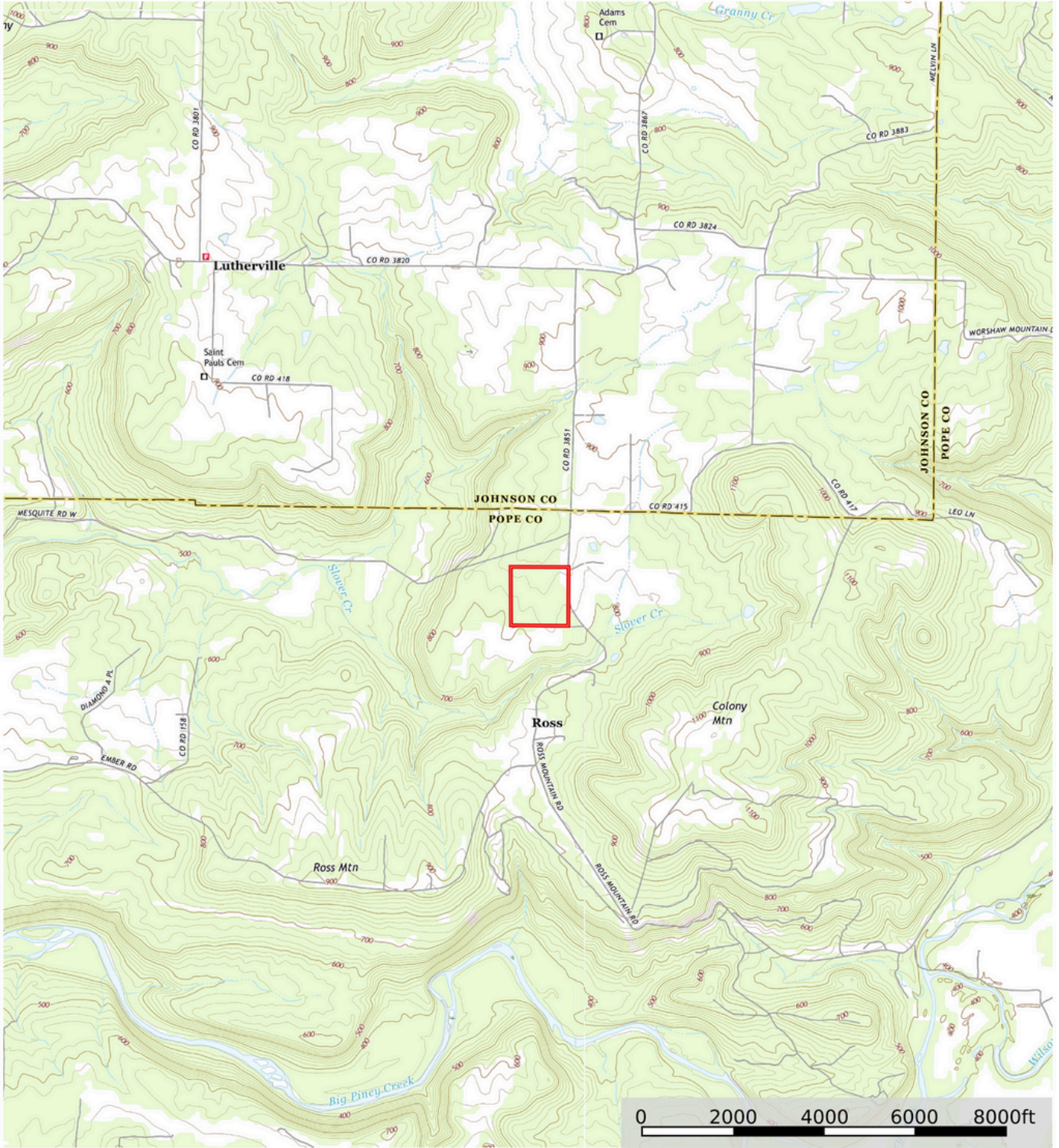
 The information contained herein was obtained from sources deemed to be reliable. Land id™ Services makes no warranties or guarantees as to the completeness or accuracy thereof.

# TOPOGRAPHY MAP

**Pope.Helton.40**

Pope County, Arkansas, 40 AC +/-

**HOLMES**  
REAL ESTATE




 Boundary

Marc Holmes  
P: 501-438-9757

[www.holmes-realestate.com](http://www.holmes-realestate.com)

2770 Main St. Ste 288, Frisco, TX 75033

 The information contained herein was obtained from sources deemed to be reliable. Land id™ Services makes no warranties or guarantees as to the completeness or accuracy thereof.

# PHOTOS



# PHOTOS





# PHOTOS



# PHOTOS



